

Headteacher: Mrs P Lyall

Hodnet Primary School, Shrewsbury Street, Hodnet, Market Drayton, Shropshire TF9 3NS  
 Tel:01630 685300 Fax:01630 685163 Email:admin@hodnetschool.co.uk [www.hodnetschool.co.uk](http://www.hodnetschool.co.uk)

Dear Parents and Carers,

Welcome back after the Easter break. As we move into the warmer weather, please ensure that your child has a sun hat in school and has sun cream applied before school on hotter days. Our topic this term is Spectacular Seashore.

Summer Term 2024	
<b>Class 1 Teacher:</b> Mrs Bessant	<b>Teaching Assistants:</b> Mrs Batkin, Mrs Clasper
<p><b>Important Dates:</b></p> <ul style="list-style-type: none"> <li>• Friday 3<sup>rd</sup> May - DEAR 3pm</li> <li>• Monday 6<sup>th</sup> May - Bank holiday</li> <li>• 20<sup>th</sup> - 24<sup>th</sup> May - Science enrichment week</li> <li>• 27<sup>th</sup> - 31<sup>st</sup> May - Half term</li> <li>• Friday 7<sup>th</sup> June - DEAR 3pm</li> <li>• Monday 10<sup>th</sup> June - Phonics screening assessment</li> <li>• Friday 14<sup>th</sup> June - Father's Day lunch. Male family members invited.</li> <li>• Friday 21<sup>st</sup> June - Sports Day. 1-3:15pm</li> <li>• Wednesday 26<sup>th</sup> June - Class 1 assembly 9:00</li> <li>• Friday 28<sup>th</sup> June - Armed forces afternoon and family picnic.</li> <li>• Friday 5<sup>th</sup> July - DEAR 3pm</li> <li>• Saturday 6<sup>th</sup> July - PTA village treasure hunt 10-3pm</li> <li>• Thurs 11<sup>th</sup> July - Summer church service 2pm, St Luke's Church</li> <li>• Fri 12<sup>th</sup> July - End of year reports out to parents</li> <li>• Friday 19<sup>th</sup> July - Break up for summer</li> </ul>	
<p><b>PE</b>                  Children will wear PE kit to school every Thursday. Please ensure PE kits are fully named. Kit should be appropriate for the weather, <u>including caps, socks and jumpers</u>, as we will aim to do PE outside as much as possible.  <b>Earrings must be removed on PE days.</b> Staff cannot remove earrings so children wearing earrings to school on PE days must be able to remove them themselves. If they are unable to remove their own earrings they will be unable to take part in the PE lesson.</p>	
<p><b>Forest Friday</b>                  We will have 'Forest Friday' sessions where learning will take place in the outdoor area. Children will need suitable outdoor kit for these sessions which could include:</p> <ul style="list-style-type: none"> <li>• Waterproof all in one or trousers and coat</li> <li>• Sun hat</li> <li>• Wellies in a separate carrier bag</li> </ul>	<p><b>Forest Friday will be on:</b>                  Friday 19<sup>th</sup> April                  Friday 3<sup>rd</sup> May                  Friday 17<sup>th</sup> May                  Friday 7<sup>th</sup> June                  Friday 5<sup>th</sup> July                  (Additional dates may be arranged around sports afternoons).</p>

We hope you find this information useful in helping your child with their learning. Please support your child by listening to them read each night and helping them to practise their spellings.

Mrs Bessant

## English

**Fiction** - The Lighthouse Keeper's Lunch (solving a problem) and Captain Barnabus and the Hidden (finding story)

**Non-fiction** - Instructions and persuasive writing

**Reading and phonics** - We will continue to have phonics sessions at least once a day. These will focus on decoding and writing words following a phonic pattern and reading and writing super power words.

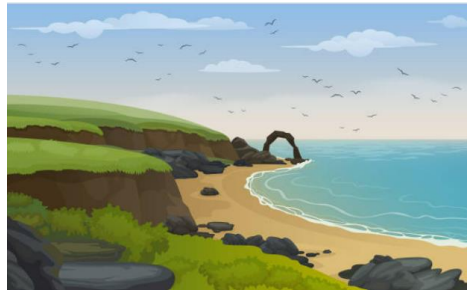
Children will read in whole class guided reading sessions and individually. We will continue to focus on comprehension skills, so it is important to question your child about what they are reading.

**Handwriting** - Children will begin to practise their letter formation.

## Science

**Seasonal changes** - We will look at changes from Spring into Summer. We will also weather patterns.

**Plants** - We will identify and name a variety of common and wild garden plants, including deciduous and evergreen trees. We will identify and describe the basic structure of a variety of common flowering plants, including trees.



# Spectacular Seashore

## Computing

**Introduction to Animation** - We will be using the Beebots and Scratch Jr to understand what algorithms are. We will create and debug simple programs and we will predict the behaviour of simple programs.

## Geography

We will name and locate the seven continents and five oceans and the countries of the UK and the seas around the UK. We will consider the similarities and differences of coastlines in the UK and the Caribbean (non-EU country study). We will use geographical vocabulary to refer to physical features (beach, cliff, coast, hill, mountain, sea, ocean) and human features (city, town, village, port, harbour, shop, lighthouse).

## History

We will consider changes to seaside holidays with living memory. We will look at the life of Grace Darling and we will consider the chronology of events in our lives.

## Maths

We will look at the composition of numbers. We will first look at the multiples of 10 from 10 to 100, then the numbers from 20-100 before looking at 11-19.

We will be counting in 2s, 10s and 5s and will begin to learn about multiplication and division.

We will look at the properties of 2D and 3D shapes. In measures, we will consider weighing and capacity using non-standard and then standard measurements. We will tell the time to the nearest half hour.

## PSHE

We will learn about growing in our world, thinking about how we have changed since being a baby. We will think about hazards that there we may need to watch out for. We will also learn about Relationships, including changes to our body as part of the KS1 Relationships and Sex Education programme.

## RE

We will learn about what it means to belong to a faith community and how we should care for the world and for others.

## Art

We will investigate colour and we will create colour wheels of sea tones using paint.

We will study the work of Monet and recreate a watercolour seascape.

## Music

Music lessons will be delivered by the Shropshire Music Service. Children will continue to learn the penny whistle.

## DT

We will use materials to create fish or sea creature puppets. We will make sandwiches for a celebratory picnic.

## PE

In PE with ActivSports, children will practise net and wall skills (tennis) and kicking a ball.

In teacher led PE lessons, children will have athletics and striking and fielding (cricket).